

## Waist Height Sliding Turnstile Model:JS-PYZ004



### General Information:

Karsun sliding speed gates provide aesthetic and effective control of entry or exit at kinds of toll collection systems like train/metro stations, and access control for commercial centers, stadiums, schools, government and private sector buildings etc.

This waist height sliding turnstile PYZ004 has high cost effectiveness, with half height and arc shape design, it enjoys high popularity in business center and governmental edifices. Be compatible with face recognition temperature scanner, fingerprints access control, QR system, ESD access control RFID, etc. Designed for heavy traffic sites with smooth and silent operation.

### Access Control System (Optional)



**SWIPE CARD**  
Access with authorized card and payment card swipe to open the gate



**IRIS RECOGNITION**  
Use the authorized eyes of Iris Recognition to pass through the entry gates



**FINGERPRINT RECOGNITION**  
Access with authorized fingerprint authentication



**PALM VEIN RECOGNITION**  
Use authorized palm vein recognition to pass into



**COIN/TICKET**  
Use disposable coins to enter



**FACE RECOGNITION**  
Use authorized face recognition to enter

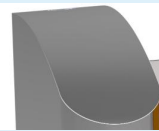


**QR CODE**  
Scan in with authorization QR code and barcode



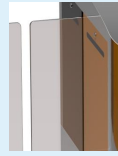
**MANUAL OPERATION**  
Manual use of wired and wireless to open gates for entry

# Features



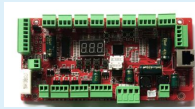
## Appearance

- High end appearance,
- Main body and lateral lids are AISI 304-grade stainless steel.
- Top lid:Black acrylic panel
- Flap panel:Acrylic/tempered,10mm thickness
- IR sensor:6 pairs(can be customized)



## Safety and User-Orientated Design

- 1.2/1.5/1.8m high retractable glass door for strict access control.
- Precise and durable mechanisms for mass traffic application sites.
- Humanized indicator lights and voice prompts



## Drive technology

- Brushless servo motor ensures the longer lifespan and smooth and durable running
- Self developed mainboard,ARM controltech
- Famound brand electrical components



- Anti-follow
- Anti-climb/creep
- Anti-panic
- Anti-pinch

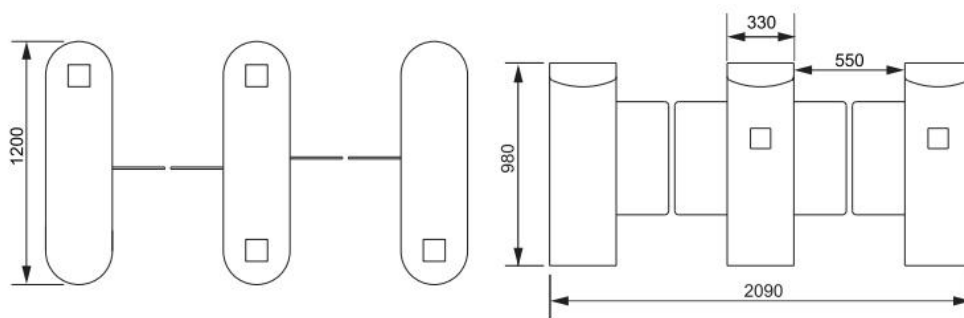
## Easy Integration

- Defaulted with card swiping window covered with black acrylic panel.
- Wide compatible to various recognition methods available
- Communication interface:Relay signal.
- Standard electrical interface for third party device.

- KARSUN provides not only turnstile system but also complete solutions for our customers,for instance,online/offline ticketing/ attendance /visitor management/EU green pass and etc.



# Measurement:



Brand name	KARSUN
Mechanism part	Connecting rod structure
Motor type	DC brushless motor
Flow rate	25-35people/minute
Passage width(mm)	650-900
Rated Power	80W
Cabint material	SUS 304;1.2mm side /1.5mm top lid
Infrared sensor	4 pairs
Door height(mm)	800
Input/Output signal	dry contact/relay signal
Dimension	1200*330*980mm
IR sensor(pair)	6 (defaulted)
Net weight	55KG
Gross weight	58KG
IP	IP44
Operating Temperature	-10 ° C- 60 ° C
Operating Humidity	5%-85%
Working Environment	Indoor/Outdoor covered
Voice prompt	Yes