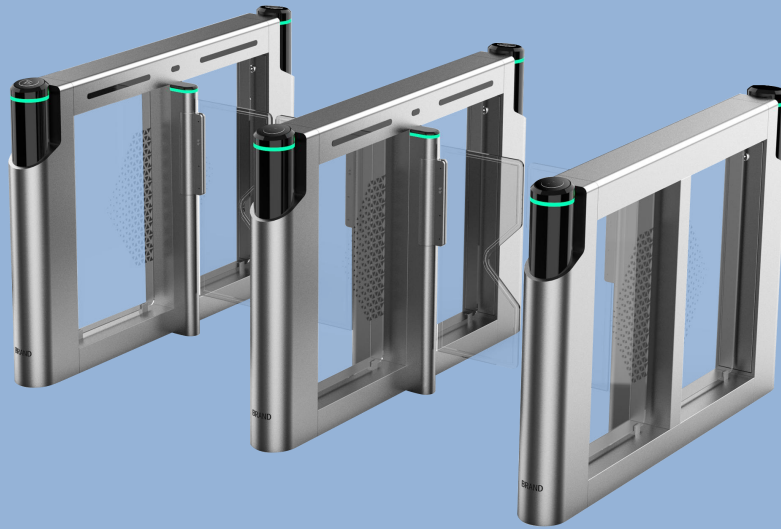


## High Speed Gate

Model No:JSTD8163-22



### Design Concept:

Karsun newly designed High Speed gate JSTD8163-22 is a high end turnstile series with patented appearance. It merits for efficient crowd control with precise positioning and high access rate.

This newly designed Glass door High speed Gates are designed to provide civilized and orderly access for pedestrians in any sites where requires entrance management. It can prevent unauthorized persons access via multiple recognition modes, like RFID reader/QR code scanner/Facial terminal/Remote control/Token etc.

### Main Features:

1. Slim styling and Elegant appearance;
2. Anti-collision Brushless servo motor drive (servo motor is optional);
3. ARM control + Modular structure, easier maintenance;
4. Main Circle Before Failure: 10 million time;
5. Support mainstream access control modes (RFID/QR/Face/Thermal detecting/EU Green Pass etc)
6. High speed gate turnstile passage width can be customized.
7. Default 8 pairs sensors to ensure passenger safety,

### Access Control System (Optional)

|   |  |   |   |
|---|--|---|---|
|  <p><b>SWIPE CARD</b><br/>Access with authorized card and payment card sex piece swipe to open the way</p> |  <p><b>IRIS RECOGNITION</b><br/>Use the authorized eyes of Iris Recognition to pass through the entry gates</p> |  <p><b>FINGERPRINT RECOGNITION</b><br/>Access with authorized fingerprint authentication</p> |  <p><b>PALM VEIN RECOGNITION</b><br/>Use authorized palm vein recognition to pass into</p>   |
|  <p><b>COIN/TICKET</b><br/>Use disposable coins to coin through to enter</p>                               |  <p><b>FACE RECOGNITION</b><br/>Use authorized face recognition to enter</p>                                    |  <p><b>QR CODE</b><br/>Scan in with authorization QR code and barcode</p>                    |  <p><b>MANUAL OPERATION</b><br/>Manual use of wired and wireless to open gates for entry</p> |

## Product Details



### Reliability

- High grade stainless steel 304 of foot thickness of 1.5mm with groove finish.
- The cabinet is waterproof, rust-proof.



- Self-developed mainboard, modular design, ARM control technology.
- Easier and less maintenance
- 2 year factory warranty.



### SWING & SIDE PANEL DESIGN

- Artistic design to make gates look different;
- Swing barrier length can be customized
- Support Logo printing.

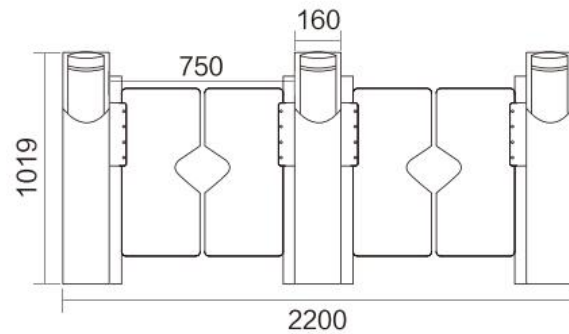
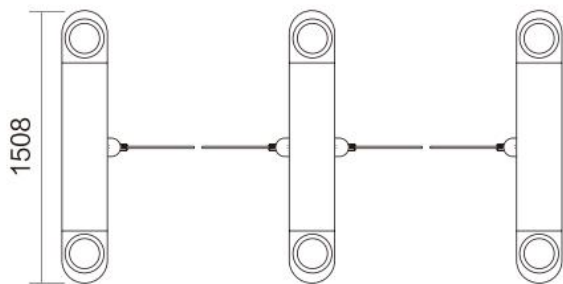


- Guest light + tri-color walkway indicating light to ensure a joyful and pleased accessing experience.
- Special designed case shape, user-friendly for passenger to swipe card or finger.

### Easy Integration

- Flexible reader installation plate. Customers can easily integrate with third party reader
- Standard electrical interface for third party device.
- By using compact mechanism, the turnstile has more space inside for integration
- KARSUN provides integration service in factory, with board and peripherals installed, ensuring compliance of the system. When the turnstile is delivered, just plug it in and do the setting. Save the cost of installation.

## Dimension



|                         |   |
|-------------------------|---|
| Housing Material        | Full body foot thickness 1.5mm+Groove SUS304    |
| Size                    | 1508*160*1020mm                                 |
| Material                | Full body foot thickness 1.5mm SUS304           |
| Passage Width           | 600-900mm                                       |
| Rated Power             | 60W   |
| Flow rate               | 30-40 persons/minute                            |
| Passage direction       | Single directional/Bi-directional               |
| Operating time          | 0.2 seconds                                     |
| Power input             | AC100-240V, 50/60HZ                             |
| Emergency signal        | Yes   |
| Dimension               | 1509*160*1019MM + swing panel 300-450MM         |
| Working voltage         | 60volt  |
| Working humidity        | 30%~95%   |
| Working temperature     | -40℃~+70℃                                       |
| Gross Weight            | 68KG  |
| Compatibility           | Compatible to all recognition methods available |
| Communication interface | RS232   |